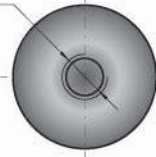
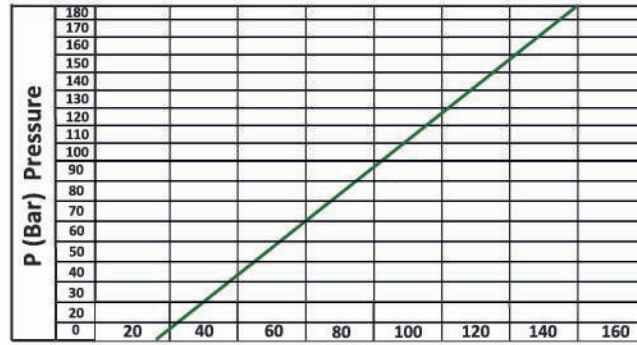
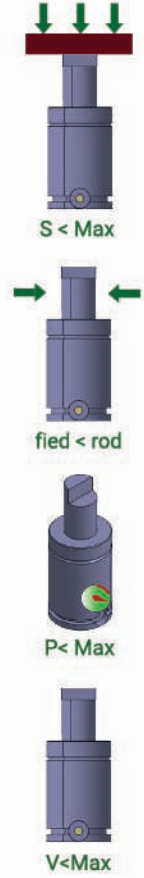


Pressure Medium Basınç Ortamı	N <sub>2</sub>	Area of Sealing Rod or Position Piston veya Mildeki Sızdırmazlık Alanı	63,62cm <sup>2</sup>
Working Temp. Çalışma Sıcaklığı	0-80°C	Force Increase By Temperature Sıcaklık Etkisiyle Kuvvet Artışı	±0,33%/C
Min.Filling Pressure Minimum Dolum Basıncı	20 bar	Recommended Max Stroke/Min Tavsiye Edilen Max. Strok/Dk	~20-100 (20°C)
Max Filling Pressure Maximum Dolum Basıncı	150 bar	Max Working Speed Max Çalışma Hızı	1,8 m/s

M6 x 6 Max



F <sub>1p</sub>	Polytropic End Force Değişken Sıc. Kuvvet
V <sub>0</sub>	Initial Gas Volume Başlangıç Hacmi
F <sub>0</sub>	Initial Force Başlangıç Kuvveti
F <sub>1i</sub>	Isothermal End Force Sabit Sıc. Kuvvet

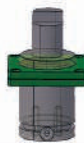


Fo (daN) Force

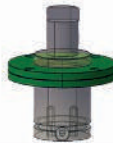
KOD(CODE)	St (mm)	L (mm)	Lmin (mm)	Fo ±%5 (daN)	F <sub>1i</sub> (daN)	F <sub>1p</sub> (daN)	V <sub>0</sub> (cm <sup>3</sup> )	⊖ (Kg)
MF 00170 007	7	40	37	+20 C 140 daN 180 bar	211	255	1.4	0.07
MF 00170 010	10	50	40		236	297	1.8	0.08
MF 00170 013	13	56	43		259	336	2.1	0.09
MF 00170 015	15	60	45		269	353	2.4	0.09
MF 00170 019	19	68	49		278	368	2.9	0.10
MF 00170 025	25	80	55		313	431	3.5	0.11
MF 00170 032	32	94	62		328	459	4.4	0.12
MF 00170 038	38	106	68		346	494	5.0	0.13
MF 00170 050	50	130	80		354	508	6.5	0.16
MF 00170 063	63	156	93		370	539	8.0	0.18
MF 00170 075	75	185	110		384	565	9.4	0.22
MF 00170 080	80	195	115		398	593	9.8	0.23
MF 00170 100	100	235	135		408	615	12.1	0.26
MF 00170 125	125	285	160		416	630	15.0	0.31

Teknik bilgiler için  
37,38,39  
sayfalarına bakınız.

**SİPARİŞ KODU**  
(ORDER CODE)



MK  
MK19



MQ  
MQ19



MKC  
MKC19