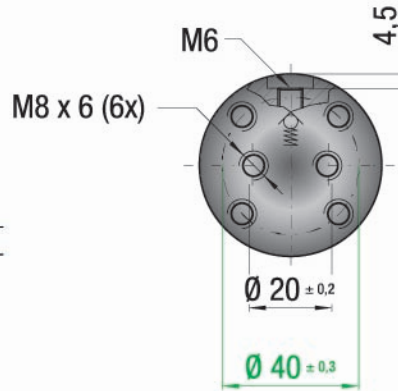
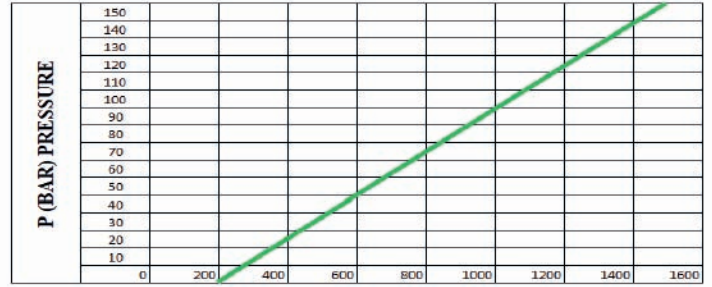



Pressure Medium	N ₂	Area of Sealing Rod or Position	2,01 cm ²
Basınç Ortamı		Piston veya Mildeki Sızdırmazlık Alanı	
Working Temp.	0-80°C	Force Increase By Temperature	±0,33%/°C
Çalışma Sıcaklığı		Sıcaklık Etkisiyle Kuvvet Artışı	
Min.Filling Pressure	20 bar	Recommended Max Stroke/Min	~20-100 (20°C)
Minimum Dolum Basıncı		Tavsiye Edilen Max. Strok/Dk	
Max Filling Pressure	150 bar	Max Working Speed	1,8 m/s
Maximum Dolum Basıncı		Max Çalışma Hızı	



Fo (daN) Force

F _{1p}	Polytropic End Force
	Değişken Sic. Kuvvet
V _o	Initial Gas Volume
	Başlangıç Hacmi
F _o	Initial Force
	Başlangıç Kuvveti
F _{1i}	Isothermal End Force
	Sabit Sic. Kuvvet

KOD(CODE)	St (mm)	L (mm)	Lmin (mm)	F _o ±%5 (daN)	F _{1i} (daN)	F _{1p} (daN)	V _o (cm ³)	 (Kg)
MF 01500 010	10	64	54	+20°C 1530 150bar	2165	2428	40.0	1,01
MF 01500 013	13	70	57		2241	2542	48.0	1,05
MF 01500 016	16	76	60		2298	2628	56.0	1,08
MF 01500 019	19	82	63		2324	2668	65.0	1,11
MF 01500 025	25	94	69		2392	2771	81.0	1,18
MF 01500 032	32	108	76		2455	2868	99.0	1,26
MF 01500 038	38	120	82		2488	2919	115.0	1,33
MF 01500 050	50	144	94		2543	3006	146.0	1,48
MF 01500 063	63	170	107		2570	3048	181.0	1,63
MF 01500 075	75	194	119		2598	3092	212.0	1,77
MF 01500 080	80	204	124		2606	3105	225.0	1,83
MF 01500 100	100	244	144		2621	3128	279.0	2,06
MF 01500 125	125	294	169		2651	3176	343.0	2,37

Teknik bilgiler için
37,38,39
sayfalarına bakınız.

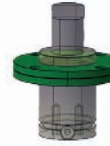
SİPARİŞ KODU
(ORDER CODE)



MK



MK63



MQ



MQ63



MKC



MKC63