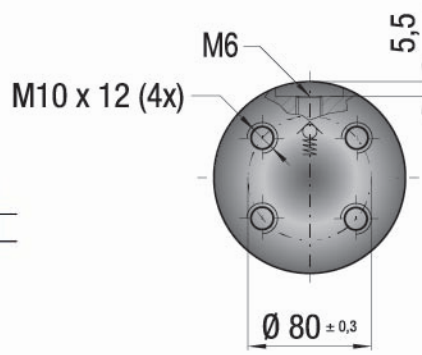
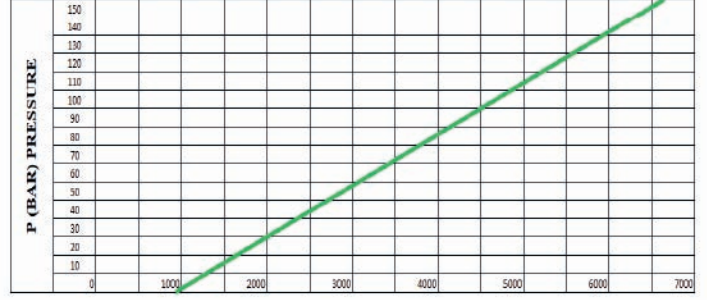
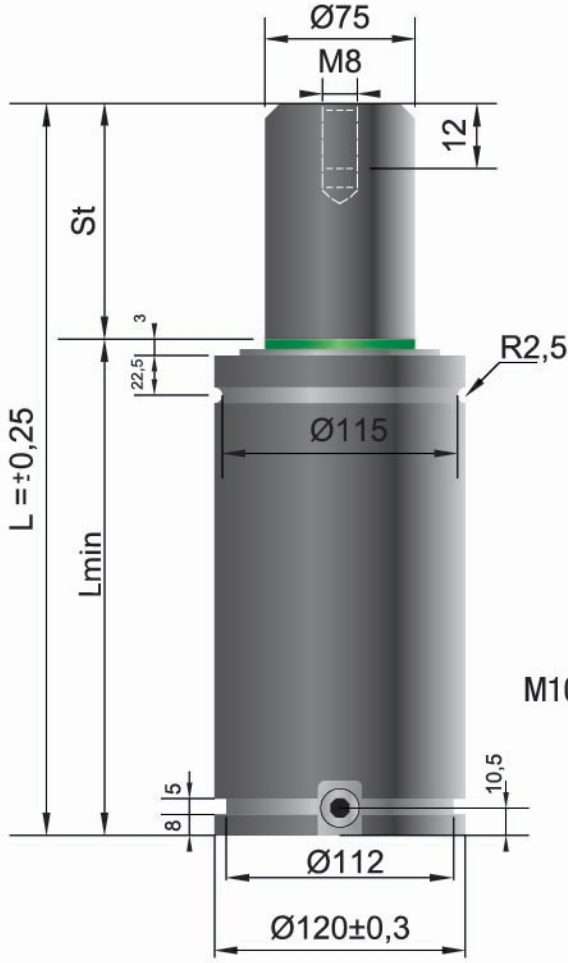


Pressure Medium	N ₂	Area of Sealing Rod or Position	2,01 cm ²
Başıç Ortamı		Piston veya Mildeki Sızdırmazlık Alanı	
Working Temp.	0-80°C	Force Increase By Temperature	±0,33%/°C
Çalışma Sıcaklığı		Sıcaklık Etkisiyle Kuvvet Artışı	
Min. Filling Pressure	20 bar	Recommended Max Stroke/Min	~20-100
Minimum Dolum Basıncı		Tavsiye Edilen Max. Strok/Dk	(20°C)
Max Filling Pressure	150 bar	Max Working Speed	1,8 m/s
Maximum Dolum Basıncı		Max Çalışma Hızı	

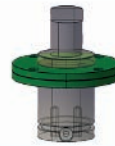
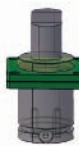


F₀ (daN) Force

F _{1P}	Polytropic End Force
	Değişken Sic. Kuvvet
V ₀	Initial Gas Volume
	Başlangıç Hacmi
F ₀	Initial Force
	Başlangıç Kuvveti
F _{1i}	Isothermal End Force
	Sabit Sic. Kuvvet

KOD(CODE)	St (mm)	L (mm)	Lmin (mm)	F ₀ ±%5 (daN)	F _{1i} (daN)	F _{1p} (daN)	V ₀ (cm ³)	(Kg)
MF 06600 016	16	100	84	+20°C 6630 150 bar	9466	10639	273	5,6
MF 06600 019	19	106	87		9720	11020	305	5,72
MF 06600 025	25	118	93		10119	11625	369	5,96
MF 06600 032	32	132	100		10458	12144	444	6,24
MF 06600 038	38	144	106		10682	12491	508	6,47
MF 06600 050	50	168	118		11011	13004	636	6,95
MF 06600 063	63	194	131		11262	13400	774	7,47
MF 06600 075	75	218	143		11418	13647	903	7,94
MF 06600 080	80	228	148		11477	13741	956	8,14
MF 06600 100	100	268	168		11651	14018	1170	8,93
MF 06600 125	125	318	193		11802	14260	1437	9,92

Teknik bilgiler için
37,38,39
sayfalarına bakınız.



SİPARİŞ KODU
(ORDER CODE)

MK

MQ

MKC

MK120

MQ120

MKC120