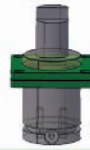


<b>F<sub>1P</sub></b>	Polytropic End Force <b>Değişken Sic. Kuvvet</b>
<b>V<sub>0</sub></b>	Initial Gas Volume <b>Başlangıç Hacmi</b>
<b>F<sub>0</sub></b>	Initial Force <b>Başlangıç Kuvveti</b>
<b>F<sub>1i</sub></b>	Isothermal End Force <b>Sabit Sic. Kuvvet</b>

KOD(CODE)	St (mm)	L (mm)	Lmin (mm)	F <sub>0</sub> ±%5 (daN)	F <sub>1i</sub> (daN)	F <sub>1P</sub> (daN)	V <sub>0</sub> (cm <sup>3</sup> )	(Kg)
MH 00700-10	10	105	95	740 1664 ± 5% 150 bar 2175 psi + 20 °C	697	1106	24,0	0,90
MH 00700-13	13	110,7	97,7		1010	1173	27,4	0,91
MH 00700-25	25	135	110		1108	1325	42,2	1,00
MH 00700-38	38	161	123		1168	1422	58,1	1,09
MH 00700-50	50	185	135		1202	1478	72,7	1,17
MH 00700-63	63	211,5	148,5		1224	1514	89,0	1,26
MH 00700-80	80	245	165		1252	1559	109,2	1,37
MH 00700-100	100	285	185		1271	1590	133,5	1,51
MH 00700-125	125	335	130		1287	1617	163,9	1,67
MH 00700-160	160	405	245		1301	1642	206,5	1,91
MH 00700-200	200	485	285		1313	1660	255,2	2,20

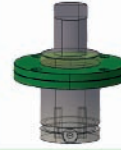
Teknik bilgiler için  
37,38,39  
sayfalarına bakınız.

**SİPARİŞ KODU**  
(ORDER CODE)



MK

MK45



MQ

MQ45



MKC

MKC45