
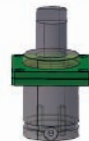


<b>F<sub>1P</sub></b>	Polytropic End Force Değişken Sic. Kuvvet
<b>V<sub>o</sub></b>	Initial Gas Volume Başlangıç Hacmi
<b>F<sub>o</sub></b>	Initial Force Başlangıç Kuvveti
<b>F<sub>1i</sub></b>	Isothermal End Force Sabit Sic. Kuvvet

KOD(CODE)	St (mm)	L (mm)	Lmin (mm)	F <sub>o</sub> ±5% (daN)	F <sub>1i</sub> (daN)	F <sub>1P</sub> (daN)	V <sub>o</sub> (cm <sup>3</sup> )	 (Kg)
MH 04200-025	25	170	145	4240 9532 ± 5% 150 bar 2175 psi + 20 °C	5877	6846	295	5,76
MH 04200-038	38	196	158		6312	7528	378	6,12
MH 04200-050	50	220	170		6601	7987	455	6,45
MH 04200-063	63	246	183		6838	8369	539	6,80
MH 04200-075	75	270	195		7008	8648	616	7,13
MH 04200-080	80	280	200		7069	8748	648	7,27
MH 04200-100	100	320	220		7269	9078	777	7,76
MH 04200-125	125	370	245		7447	9374	938	8,45
MH 04200-150	150	420	270		7581	9599	1098	9,13
MH 04200-160	160	440	280		7656	9724	1156	9,40
MH 04200-175	175	470	295		7712	9820	1253	9,82
MH 04200-200	200	520	320		7791	9953	1413	10,50
MH 04200-250	250	620	370		7908	10151	1734	11,87
MH 04200-300	300	720	420		8123	10519	2016	13,24

Teknik bilgiler için  
37,38,39  
sayfalarına bakınız.

**SİPARİŞ KODU**  
(ORDER CODE)



MK  
MK95



MQ  
MQ95



MKC  
MKC95